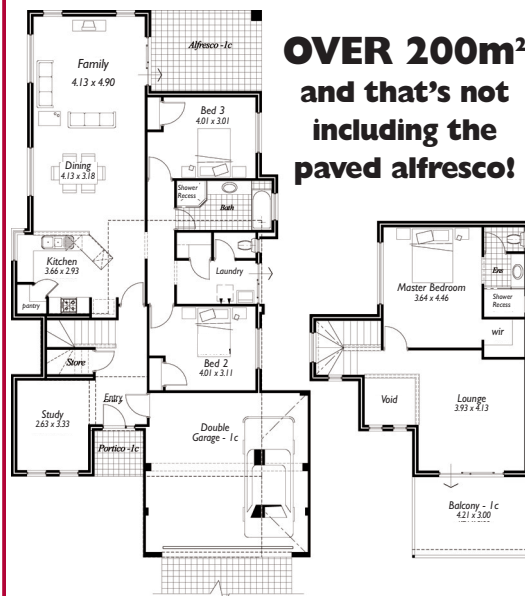


# Our best just got even better

By popular demand and based on client feedback, we've upgraded one of our most successful homes, the Riverina, and have pleasure in presenting



## The Riverina 'Alfresco'



**OVER 200m<sup>2</sup>**  
and that's not  
including the  
paved alfresco!

- Huge master bedroom • Large balcony
- Double sized ensuite shower

**We pride ourselves on having all our competitors standard features plus more:**

- Fixed price Master Builders contract
- Concrete suspended slab and stairs
- Stanford internal doors
- Vitreous china vanity basins
- Colorbond roof cover
- Colorbond fascia, gutters & downpipes
- R3-5 glasswool insulation
- Stainless steel canopy rangehood

**Alterations,  
Variations,  
Individual and  
One-Off Plans  
offered at no  
extra charge\***

Call our consultant for more details and to arrange a brochure or obligation free meeting



**Gordon 0419 944 307**

*Central Avenue*  
homes

Unit 11  
8 Bannick Court  
Canning Vale  
Fax 9456 3555

\*Conditions apply

**Ph 9456 3366**

Visit us at [www.accentonhomes.com.au](http://www.accentonhomes.com.au)